



MAPPING THE JOURNEY OF WINS 2021



INTRODUCTION TO THE DEPED WINS PROGRAM



'in collaboration with the WinS TWG partners



WASH IN SCHOOLS
THREE STAR APPROACH



Implemented by:



Save the Children



Policy Objectives

1. Ensure correct knowledge and understanding among learners of effective hygiene and sanitation projects;
2. Improve equitable access to safe water, adequate toilets, and hand washing facilities;
3. Improve hygiene and sanitation practices among the learners to enable them to develop life-long positive hygiene and sanitation behaviors;
4. Ensure that schools are kept clean and safe through school-based solid waste management, proper drainage, the elimination of breeding grounds for mosquitoes to prevent vector-borne diseases, and strengthen food safety ; and
5. Engage public and private partners for program implementation and sustainability.



KEY COMPONENTS OF WASH IN SCHOOLS



The DepED WASH in Schools Program has eight (8) components, namely:



- 1.Oral hygiene and proper handwashing;
- 2.Provision of safe and adequate water supply;
- 3.Provision of toilet, handwashing, and drainage facilities;
- 4.Environmental sanitation (including the elimination of breeding grounds for mosquitoes that carry the dengue virus) and solid waste management;
- 5.Food sanitation;
- 6.Menstrual Hygiene Management;
- 7.Deworming; and
- 8.Hygiene and sanitation education



WASH IN SCHOOLS: ADDRESSING SDGs IN EDUCATION AND HEALTH



Sustainable Development Goals 4 & 6 provided clear targets and indicators that led to the creation of a national WinS policy (DepEd Order No. 10, Series of 2016) and the benchmarking of national standards.

SDG	SDG TARGETS AND INDICATORS
 <p>Goal 6: Ensure availability and sustainable management of water and sanitation for all</p>	<p>6.1 By 2030, achieve universal and equitable access to safe and affordable drinking water for all</p> <p>6.2 By 2030, achieve access to adequate and equitable sanitation and hygiene for all and end open defecation, paying special attention to the needs of women and girls and those in vulnerable situations</p>
 <p>Goal 4: Ensure inclusive and quality education for all and promote lifelong learning</p>	<p>4.a Build and upgrade education facilities that are child, disability and gender sensitive and provide safe, non-violent, inclusive and effective learning environments for all</p> <p>4.a.1 Proportion of schools with access to: (a) electricity; (b) the internet for pedagogical purposes; (c) computers for pedagogical purposes; (d) adapted infrastructure and materials for students with disabilities; (e) basic drinking water; (f) single-sex basic sanitation facilities; and (g) basic handwashing facilities (as per the WASH indicator definitions)</p>

INTRODUCTION TO THE DEPED WINS PROGRAM

- What is in place?
- How does it work?
- What are the drivers for DepED WinS implementation?

STAR CRITERIA

HYGIENE

	★ ★	★ ★ ★
HANDWASHING		
Supplies	Daily SUPERVISED group handwashing with soap for all children is led by a mix of teachers and students.	Daily SUPERVISED group handwashing with soap for all children is led by student leaders.
Facilities	Regular supply of soap for handwashing. Pupils to group handwashing facility with soap ratio of 1:200 for one shift.	Regular supply of soap for handwashing. Pupils to group facility with soap ratio of 1:100 for one shift.
Practices		There are individual handwashing facilities with soap in strategic areas in the school (e.g. near canteen/reading areas, play areas and toilets). The practice of individual handwashing with soap is done during critical times.
TOOTHBRUSHING		
Supplies	Daily SUPERVISED activity of toothbrushing with fluoride toothpaste for all children is led by a mix of teachers and students.	Daily SUPERVISED activity of toothbrushing with fluoride toothpaste for all children is led by student leaders.
Facilities	Regular supply of fluoride toothpaste for the toothbrushing activity.	Regular supply of fluoride toothpaste for the toothbrushing activity.
ENABLERS		
Plans	Repair and maintenance requirements are reflected in the School Improvement Plan (SIP) and Annual Improvement Plan (AIP).	Repair and maintenance requirements are reflected in the School Improvement Plan (SIP) and Annual Improvement Plan (AIP).
Funds	Soaps, toothbrush and toothpaste are provided by the school through DepED funds complemented by external partners.	Soaps, toothbrush and toothpaste are provided by the school through DepED funds complemented by external partners.
MENSTRUATIONAL HYGIENE MANAGEMENT (MHM)		
		MHM that is secure, private and comfortable and necessary in the CIL.

WASH IN SCHOOLS THREE STAR APPROACH

NATIONAL GUIDELINES
WHAT YOU NEED TO KNOW

OPERATIONAL STANDARDS

WATER

★	★ ★	★ ★ ★
Safe drinking water is not provided by the school. Children are required to bring their own drinking water.	Safe drinking water is provided by the school but supply is not regular.	Safe drinking water is provided for free for all children in the school at all times.
The school coordinates with the relevant agency/office to test the quality of water.	The quality of water is tested once every calendar year in coordination with the relevant agency/office.	The quality of water is tested more than once every calendar year in coordination with the relevant agency/office.
Regardless of source, water for cleaning is available only for certain days of the week.	Regardless of source, water for cleaning is available on a daily basis but only on certain hours of the day.	Regardless of source, water for cleaning is available on a daily basis in all school hours.

DEWORMING

★	★ ★	★ ★ ★
Deworming is done semi-annually in the presence of a health personnel, in coordination with DOH, and with parent's consent.	Deworming is done semi-annually in the presence of a health personnel, in coordination with DOH, and with parent's consent.	Deworming is done semi-annually in the presence of a health personnel, in coordination with DOH, and with parent's consent.
50-74% of school students were dewormed.	75-84% of school students were dewormed.	At least 85% of school students were dewormed.

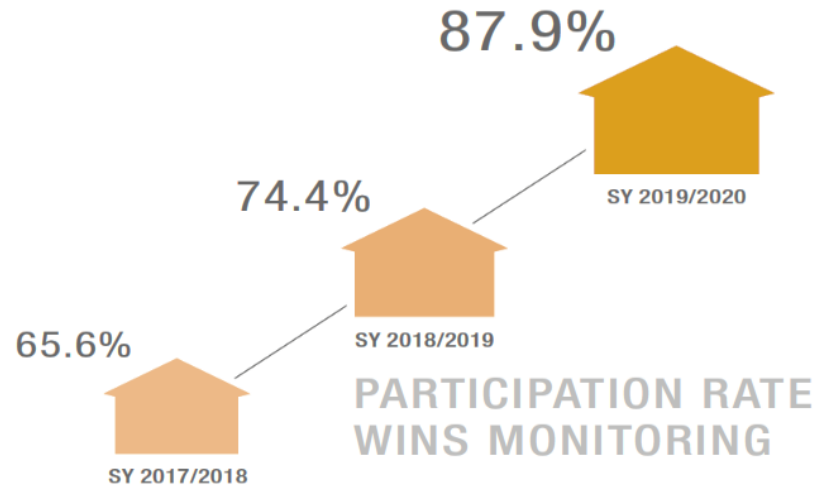
HEALTH EDUCATION

★	★ ★	★ ★ ★
IEC materials are present only in the schoolboard or wall.	IEC materials are present in classrooms and strategic places (e.g. canteen, play areas, toilets, handwashing facilities, etc.)	IEC materials are present in classrooms and strategic places (e.g. canteen, play areas, toilets, handwashing facilities, etc.)
There are organized teams and accountable units to promote WinS (e.g. TWGs, student clubs).	There are organized teams and accountable units to promote WinS (e.g. TWGs, student clubs). WinS is part of INSET.	There are organized teams and accountable units to promote WinS (e.g. TWGs, student clubs). WinS is part of INSET.
	Advocacy is done during GPA assembly.	There are planned and organized activities for parents/stakeholders to learning and advocating WinS.

THREE-STAR APPROACH MATRIX IN THE PHILIPPINES

<p>★★★ Three Star School Meeting National Standards</p>	<ul style="list-style-type: none">› School facilities and systems upgraded to meet national standards
<p>★★ Two Star School Incremental Improvements</p>	<ul style="list-style-type: none">› Hygiene education and facilities to promote handwashing with soap after toilet use› Improved Sanitation facilities, plus facilities and education for menstrual hygiene management› Low-cost point-of-use water treatment introduced in schools.
<p>★ One Star School Daily Routines to Promote Healthy Habits</p>	<ul style="list-style-type: none">› Daily supervised group handwashing with soap, normally before the school meal› Daily supervised cleaning of toilets, and provision of water and soap (at least one usable toilet for girls and one for boys); no open defecation› Daily supervised use of drinking-water bottles by all children
<p>No Star School The Existing Situation for Many Schools</p>	<ul style="list-style-type: none">› Limited or no hygiene promotion› May or may not have WASH infrastructure

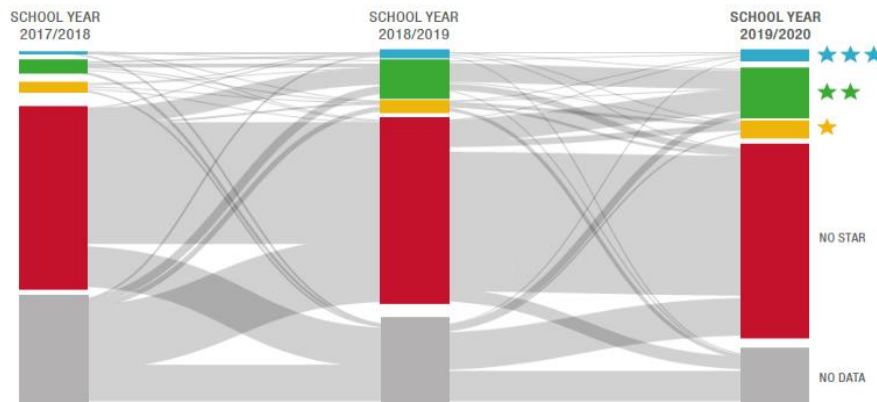
SELECTED RESULTS OF DEPED WINS MONITORING SY 2019/2020



- ✓ Increased School Participation Rate
- ✓ Improved Compliance to 3-Star WASH in Schools Indicators

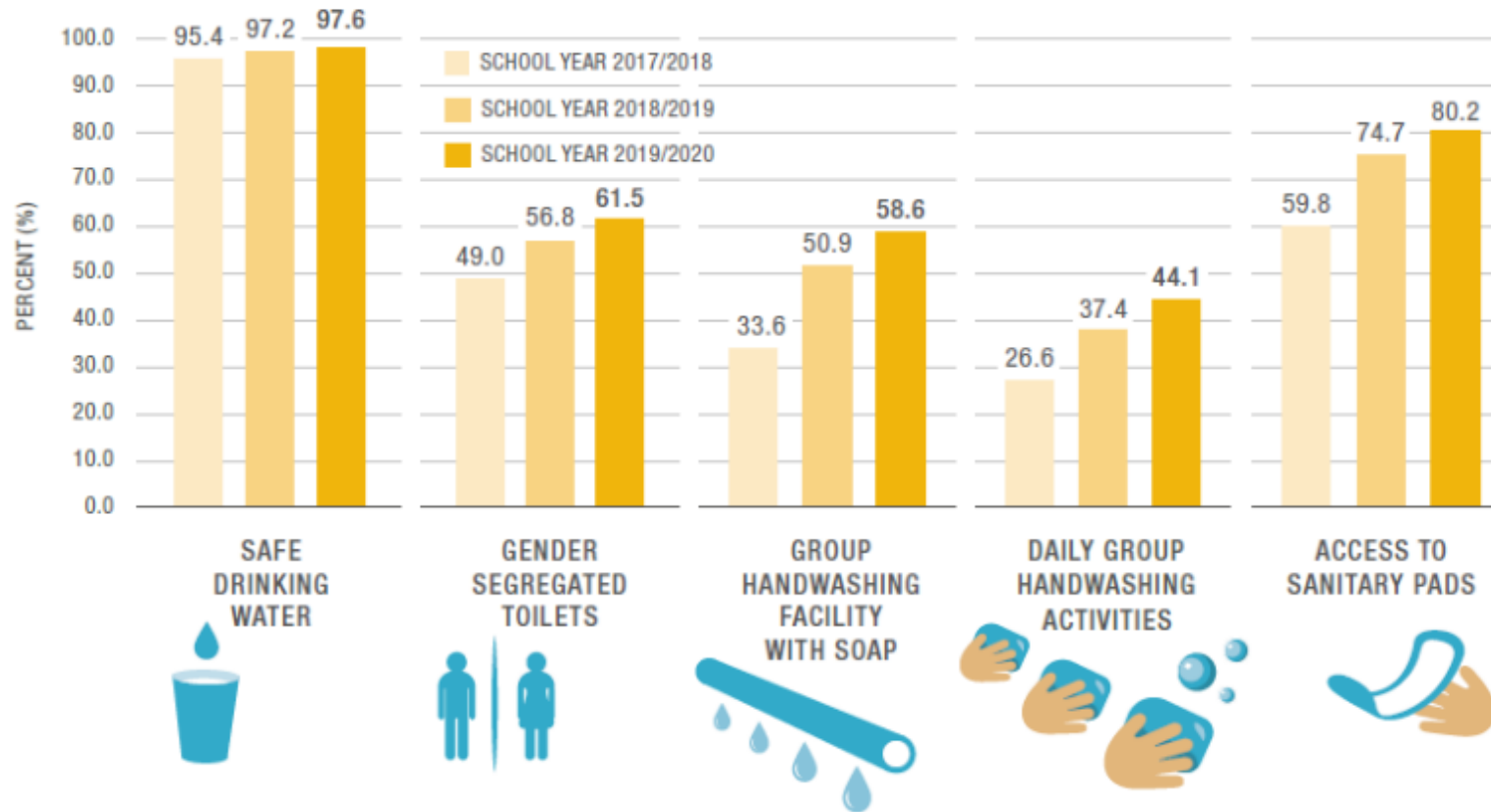
The number of schools reaching the national WinS standards has increased dramatically from only 41 schools at the baseline to nearly a thousand in SY 2019/20.

FIGURE 5. CHANGES IN THE OVERALL WinS STATUS OF SCHOOLS OVER THE MONITORING PERIOD



SELECTED RESULTS OF DEPED WINS MONITORING SY 2019/2020

FIGURE 1. COMPLIANCE TO THE FIVE CRUCIAL INDICATORS



SELECTED RESULTS OF DEPED WINS MONITORING SY 2019/2020

INDICATORS	Schools (in Percent)		
	Elementary	Secondary	ALL
	N= 30,719 79% of total	N= 6,727 79% of total	N= 37,446 79% of total
Access to Water for Cleaning			
No access	2.8	2.6	2.7
Available water on certain days of the week only	58.9	62.7	59.5
Available water daily but only in certain hours	21.9	22.3	22
Available water daily for 24 hours	16.5	12.4	15.8
NO Regular Supply of Soap for Handwashing	21.1	31.3	22.9
Student to Group Handwashing Facility with Soap Ratio¹			
No Group Handwashing Facility	24.7	20.1	23.9
GHWF Ratio of >20 for Elementary & >50 for Secondary	55.3	61.1	56.3
GHWF Ratio of <20 for Elementary & <50 for Secondary	11.6	11.4	11.5
GHWF Ratio of <10 for Elementary & <25 for Secondary	8.4	7.5	8.3
<i>¹the ideal GHWF ratio is <10 for elementary and <25 for secondary</i>			



• WinS in DepEd's Learning Continuity Plan

- *Preparation of school facilities for potable water and handwashing*
- *Compliance to Required Health Standards in Schools*
- *WinS Capacity Building for Teachers and School Heads*

Recording

Status of Implementation

Activity/Program	Dates/Period
Enrollment <ul style="list-style-type: none"> • Remote enrollment for the first two weeks of June • Enrollment kiosks or desks in the schools/barangays will be set up where parents who have no access to any virtual platforms can physically enroll their children on the third and fourth week of June. Strict adherence to health standards will be followed • Learner Enrollment and Survey Form to be accomplished to generate learner and household information important for programming of learning delivery modalities. 	June 1 to 30
Brigada Eskwela and Oplan Balik Eskwela <ul style="list-style-type: none"> • Reconfigured to jointly assist the implementation of BE-LCP, pursuant to DepEd Memo no. 53, 2020 titled Joint Implementing Guidelines on the 2020 Brigada Eskwela and Oplan Balik Eskwela. 	June 1 to August 29

Roadmap to Readiness

Activity/Program	Dates/Period
Safe Back to Schools (when face-to-face classes is already safe/allowed) <ul style="list-style-type: none"> • Policy issuance on Required Health Standards in schools • Disinfection of schools • Strict adherence to the standards set in DO No. 10, s. 2016 titled Policy and Guidelines for the Comprehensive Water, Sanitation, and Hygiene in Schools (WINS) • Replacement of ceilings of classrooms build from 2014-2019 • Repair/rehabilitation of calamity-related damages 	<ul style="list-style-type: none"> • June onwards and as safety/national policy/budget will allow

Capacity Building for Division Officers, School Leaders and Teachers, and Information Dissemination

- **WINS Massive Open Online Courses in partnership with SEAMEO Innotech**
 - ✓ **Leading WinS**
 - ✓ **Accelerating WinS**
- Webinars in partnership with the WINS TWG Group (GIZ, Save the Children, Unicef)
 - ✓ **Dashboard Orientation with DepEd Field Engineers**
 - ✓ **MHM Day Public Webinar**
 - ✓ **Webinars conducted on LCP, WASH at Home, Integrating WASH in Learning by UNICEF, SCP**
 - ✓ **WinS Webinars for Region 4A and NCR**



DepEd TV Broadcasts in Support of WinS

Global Handwashing Day

World Toilet Day

SEAMEO and other Talks

- SEAMEO Recfon
- WASH in ECCD

Other International Learning Exchange



REQUIRED HEALTH STANDARDS

- DepEd Order no. 14, S. 2020
Guidelines on the Required Health Standards in Basic Education Offices and Schools



Republic of the Philippines
Department of Education

25 JUN 2020

DepEd ORDER
No. 014 s. 2020

**GUIDELINES ON THE REQUIRED HEALTH STANDARDS
IN BASIC EDUCATION OFFICES AND SCHOOLS**

To: Undersecretaries
Assistant Secretaries
Minister, Basic, Higher and Technical Education, BARMM
Bureau and Service Directors
Regional Directors
Schools Division Superintendents
Public and Private Elementary and Secondary School Heads
All Others Concerned

1. The Department of Education (DepEd) is committed to ensure safe educational continuity amidst the challenges of COVID-19. Learning opportunities must be provided to give hope and stability, contribute to the normalization of activities in the country, and facilitate development of our learners and bring normalcy to their lives.
2. In the provision of learning opportunities, the health and safety of our learners and teaching and non-teaching personnel are of utmost importance and must be protected at all times.
3. To ensure the safe return to schools and DepEd offices when allowed by the Department of Health (DOH), the Inter-Agency Task Force for the Management of Emerging Infectious Diseases (IATF), or the Office of the President, DepEd issues the enclosed **Guidelines on the Required Health Standards in Basic Education Offices and Schools** (Enclosure No. 1) for the guidance of all learners, teachers, and nonteaching personnel nationwide. The specific **measures for COVID-19 mitigation in schools and offices** are detailed in Enclosure No. 2 and Enclosure No. 3, respectively.
4. The guidelines and the specific interventions are primarily based on the DOH Administrative Order No. 2020-0015 or the *Guidelines on the Risk-Based Public Health Standards for COVID-19 Mitigation*, cited by the IATF to aid all sectors in all settings to implement non-pharmaceutical interventions.
5. The DepEd Central Office (CO), Regional Offices (ROs), Schools Division Offices (SDOs) and all public and private elementary and secondary schools/community learning centers (CLCs) are mandated to adopt the guidelines on the required health standards and implement the specific interventions for COVID-19 mitigation. Other measures may be instituted, guided by the following principles laid out in the DOH Administrative Order No. 2020-0015:
 - a. Shared accountability
 - i. All efforts shall espouse the government's strategic directions of national government-enabled, local government-led, and people-centered response to the COVID-19 health event

- WASH Resources



WinS Brochure - Guidelines	https://wins.deped.gov.ph/wp-content/uploads/2019/10/TSA-WinS-DepEd-Brochure-Memorandum-30-10-2017.pdf
Water Booklet	https://wins.deped.gov.ph/wp-content/uploads/2019/10/TSA-WinS-Booklet-Water-FINAL-WEB-20181031.pdf
Sanitation Booklet	https://wins.deped.gov.ph/wp-content/uploads/2019/10/TSA-WinS-Booklet-Sanitation-FINAL-WEB-20181105.pdf
Hygiene Booklet	https://wins.deped.gov.ph/wp-content/uploads/2019/10/TSA-WinS-Booklet-Hygiene-FINAL-WEB-20181031.pdf
Deworming Booklet	https://wins.deped.gov.ph/wp-content/uploads/2019/10/TSA-WinS-Booklet-Deworming-FINAL-WEB-20181031.pdf



<https://wins.deped.gov.ph/category/wins-resources/>

10 Immediate WinS Actions - Preparing for re-opening of schools

Support for school heads to manage the response to COVID-19



10 IMMEDIATE WASH in SCHOOLS (WinS) ACTIONS

PREPARING FOR REOPENING OF SCHOOLS – SUPPORT FOR SCHOOL HEADS TO MANAGE THE RESPONSE TO COVID-19

WASH in SCHOOLS NETWORK

- 1 HANDWASHING**
Set up available handwashing facilities with soap at the entrance of schools (tippy taps, buckets with taps, group washing facilities) with sufficient water taps that allow physical distance so that children, teachers, staff and visitors can wash hands before entering school. Make sure that toilets have functional handwashing facilities with soap and water. Facilities should be accessible to all users.
- 2 WATER AVAILABILITY**
Ensure water is available for handwashing, drinking, and other uses. If inconsistent or inadequate water supply is a concern for the school, increase the water storage capacity with the help of the community or ask children to bring a bottle of water from home, if possible.
- 3 SUPPLIES**
Calculate the need and ensure sufficient supply for consumable resources, including: soap (bar or liquid), hand sanitizer (with at least 70% alcohol concentration, only if contextually relevant) and sodium hypochlorite for cleaning/disinfecting (household bleach diluted to 0.1%), sponges, brooms and buckets, and protective equipment such as face masks and gloves for cleaners. Alcohol-based disinfectants with at least a 70% alcohol concentration may be used as an alternative to bleach.
- 4 CLEANING & DISINFECTING**
Ensure regular cleaning and disinfecting according to national guidelines and global recommendations. High touch surfaces should be prioritized for disinfection. Always clean surfaces with soap and water or detergent to remove organic matter prior to disinfection. Calculate the time needed, ensure that staff for cleaning and disinfecting are available and uses gloves and face masks. Involve the Parents Teacher Association, community members and students as needed and appropriate for cleaning. Ensure handwashing stations and toilet facilities are usable and clean.
- 5 WASTE MANAGEMENT**
Ensure bins are located in classrooms, in toilet blocks and at strategic locations on school grounds and are safely emptied daily using waste management system.
- 6 PHYSICAL DISTANCING**
Make sure children and school staff adhere to physical distancing keeping at least 1 metre apart (or as recommended by national guidelines). Possible options are: Assign children to specific shifts, stagger the beginning and end of the school days as well as during breaks, create space between desks or teach outdoors or with open windows, if possible, and paint or tape lines on the floor to demonstrate physical distance at places where students line up or gather (e.g. in front of toilets or washing stations).
- 7 ESTABLISH A MONITORING TEAM**
Assign staff member(s) – teachers and staff like cleaners, guards, gardeners or older students, community members and WASH clubs, etc. – to oversee handwashing stations and toilets (availability of water and soap, maintenance issues, handwashing behavior and compliance of rules for physical distancing etc.).
- 8 ORIENTATION/TRAINING**
Organize orientation for all teachers, non-teaching staff and community members on WASH in Schools and Covid-19 and ensure that everyone understands their specific role. Ensure teachers orient the learners, by using age appropriate hygiene promotion materials.
- 9 CHECKLISTS**
Introduce and ensure the use of checklists (including: date, time when checked, name of responsible person) for teachers and non-teaching staff to ensure routines are implemented daily. Specifically, introduce checklists for:
 - > School entrance (handwashing behaviour, handwashing stations, water and soap availability)
 - > Classrooms (cleaning & disinfection protocol)
 - > Toilets and waste management
- 10 HYGIENE CULTURE**
Establish a culture of hygiene in school and encourage hygiene behavior change in the community. Emphasize that all teaching and non-teaching staff are part of a team working to address pandemic preparedness and response and make sure that education can move on and schools are clean and safe places. Recognize individual WASH champions in school and community.

CONTACT: WinS-COVID-19@susana.org

FURTHER INFORMATION: www.susana.org

- > 10 IMMEDIATE WASH ACTIONS (latest version): <https://bit.ly/3077ur>
- > KNOWLEDGE MAP WASH in SCHOOLS & CORONAVIRUS: <https://bit.ly/2JdvM39>
- > SAFE BACK TO SCHOOL, A PRACTITIONERS GUIDE: <https://bit.ly/2G58u16>



19 June 2020 / The WASH in Schools (WinS) Network (GIZ, UNICEF, Save the Children, Water Aid) and affiliated as a global inter-agency network of WASH practitioners from respective institutions with consensus of over 10 organizations.

English:

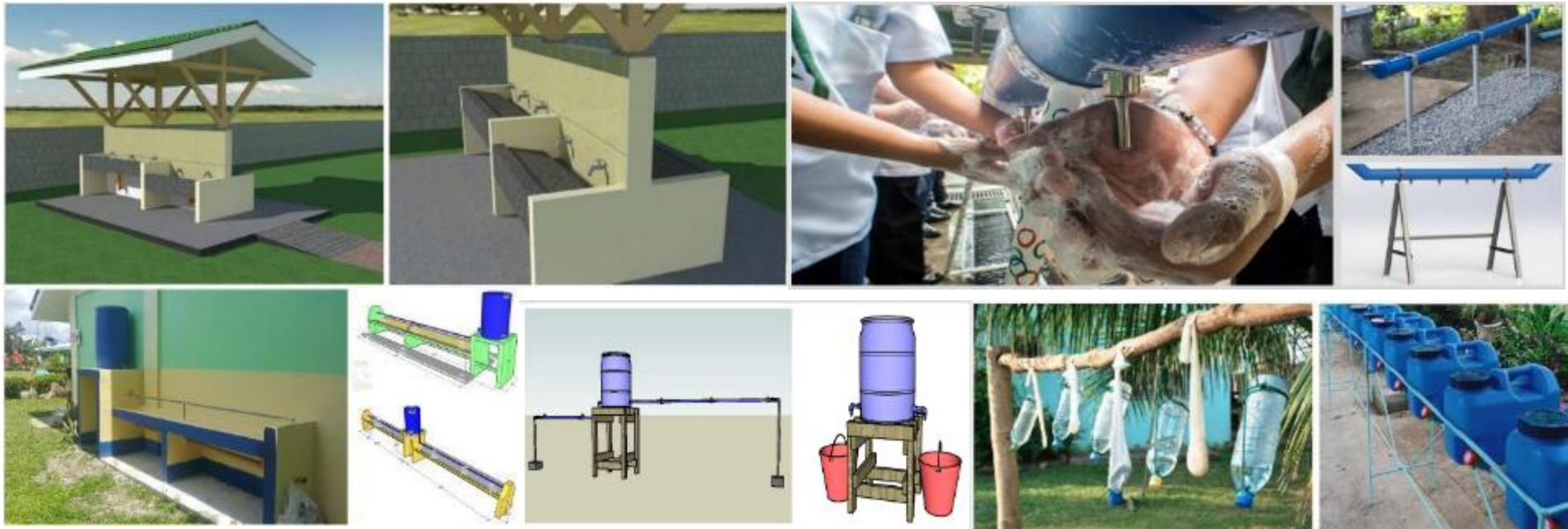
<https://www.susana.org/en/knowledge-hub/resources-and-publications/library/details/3855>

Tagalog:

<http://www.fitforschool.international/resource/10-immediate-wash-in-schools-wins-actions-for-school-heads-to-manage-the-response-to-covid-19-tagalog/>



- Facilities Planning and Development





WinS Monitoring Results 2017/18- 2019/20

<https://wins.deped.gov.ph/wp-content/uploads/2020/12/TSA-WinS-Monitoring-Booklet-Web-2020-11-27.pdf>

HYGIENE BEHAVIOUR CHANGE MODEL: GROUP APPROACH TO HYGIENE PROMOTION

Skills-based approach

- Learning by doing
- Repetition = routine

Social norm setting - peer expectation

- *Gaya-gaya*
- Group motivation
- *FUN!*

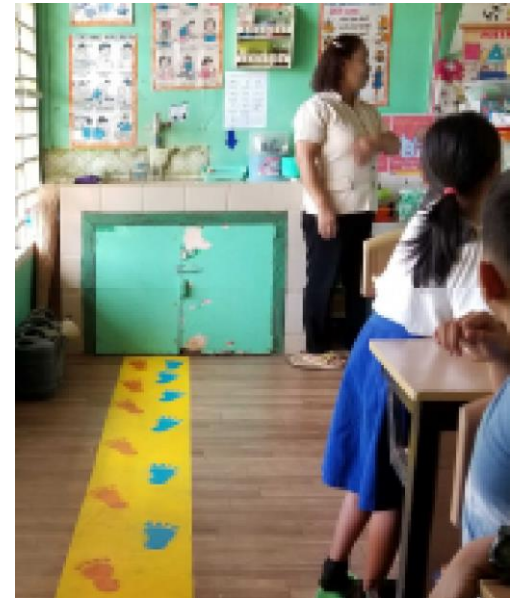
Efficiency – upholds importance and doability of hygiene practice

- Organized and time-economical
- Optimal use of supplies and facilities



BEHAVIORAL MOTIVATIONS FOR INDEPENDENT HANDWASHING

- ✓ FACT: Most students know when and how to wash hands, but do not translate into actual practice.
- ☐ Need: Behavioral triggers for handwashing practice
- Hi-Five for Hygiene and Sanitation Research and Development Project
 - From knowledge to emotion - disgust and affiliation as motivators
 - But pupils tend to be distracted and forget
- Nudges Intervention Project – visual/physical cues to prompt handwashing at the critical moment of decision to wash hands
- ❖ Approaches and tools are not stand-alone.





WASH IN SCHOOLS TWG

- **Monthly Meetings**
- **Brainstorming Meetings**
- **Planning Meetings**
- **Coordination Meetings with PAS, ICTS, NEAP, EPS, and other Offices**
- **Participation on Education Forum and Education Cluster**
- **Other Meetings**