



Republic of the Philippines
 Department of Education

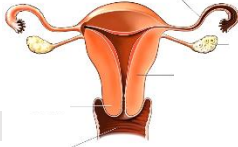
WEEKLY HOME LEARNING PLAN IN SCIENCE
GRADE 5
Quarter 2, Week 1
Date: _____

(For Digital and Printed Modular Distance Learning Modalities)

Day & Time	Learning Area	Learning Competency	Learning Tasks	Mode of Delivery
Wednesday (8:00 AM-9:00 AM)	Science 5	<p>Week 1 MELCs *Describe the parts of the reproductive system and their functions.</p> <p>Learning Competency: Describe the parts of the reproductive system and their functions. (S5LT-IIa-1)</p> <p>Objectives: 1. Identify the parts of the female reproductive system 2. Describe the female reproductive system.</p>	<p>A female has also a Reproductive System whose parts play an important role in the reproduction. Let us know them and their functions as we discuss and do some of the activities prepared for you.</p> <p>A. For the first activity, cut each piece of puzzle found in ANNEX A and form it to reveal the picture.</p> <p><i>(Note: Be careful in doing this activity. If possible, ask your parents/guardian for assistance)</i></p> <p>What illustration did you form after doing the activity?</p> <p>B. For the next activity, let us see</p>	<p>FOR DIGITAL MODULAR CLASS: Send outputs to the platform recommended by the subject teacher.</p> <p>FOR PRINTED MODULAR CLASS: Have the parent hand-in the output in the school or in designated kiosks near your area of residence.</p>



Republic of the Philippines
Department of Education

		<p>MHM Integration:</p> <p>A. Ways on how to take care the vagina.</p> <ol style="list-style-type: none"> 1. Wash your genital areas with mild soap and water. 2. Do not borrow another person's underwear. 3. Change underwear regularly. <p>B. It is alright to mention or name the Female Reproductive System in local dialect/terms but it should not make fun. It important to use the correct terms to refer to both the male and female reproductive parts.</p>	<p>if you could be able to identify the parts of the Female Reproductive System. Do the activity sheet in Annex B.</p> <p>Sample illustration:</p>  <p>After accomplishing the activity sheet in Annex B, try answering the questions below.</p> <ol style="list-style-type: none"> A. Do you think you were able to name the parts correctly? B. Which part of the system is already familiar to you? What do you call to that part? <p>Find out the correct labelling of the parts of the Female Reproductive System later after the discussion.</p> <p>One part of the female Reproductive System</p>	
--	--	--	---	--



Republic of the Philippines
Department of Education

			<p>that you are familiar with is the vagina. It plays an important role in the reproduction. It needs to be taking care of. How will you do that if you are a girl? If you are a boy, how would you help your younger sister/s in taking care of this part?</p> <p>(Note to the learner: <i>Read the MHM Integration in letter A in the 3rd column.)</i></p> <p>Why is it necessary to practice proper hygiene on the genital areas?</p> <p>C. Based on the previous activity, what are your answers to the questions below?</p> <ol style="list-style-type: none">1. What are the parts of the female reproductive system?2. How will you describe the Female Reproductive System?	
--	--	--	--	--

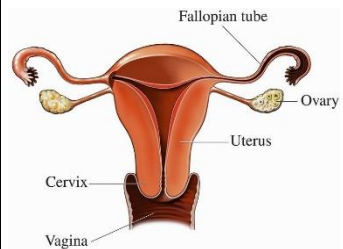


Republic of the Philippines
Department of Education

D. Let's us find out if all you answers for the parts of the Female Reproductive System are correct. Below are its parts and specific functions. Study them.

The Female Reproductive System is made of several organs which include the ovaries, fallopian tubes, uterus, and vagina. It is specifically responsible for producing egg cells and supporting a developing baby inside a mother's womb.

Parts of the Female Reproductive System





Republic of the Philippines
Department of Education

			<p>Ovary The ovaries are oval in shape and located in the lower part of the abdomen.</p> <p>Fallopian tube A pair of tubes that connects the ovaries and the uterus.</p> <p>Uterus Also called the womb, the uterus is a hollow muscular organ located at the lower abdomen. It has a soft, smooth inner lining called the uterine or endometrium.</p> <p>Cervix The cervix is located at the lower part of the uterus. It is a narrow opening between the uterus and the vagina.</p> <p>Vagina Also called the birth canal, the vagina is a hollow, muscular tube that extends from the cervix to the vaginal opening called vulva.</p>	
--	--	--	--	--



Republic of the Philippines
Department of Education

			<p>(Note to the learner: <i>Read the MHM integration letter B before proceeding to the next part.)</i></p> <p>(Note to the parents/guardian: <i>Read the MHM integrations, letters A and B. This is for your awareness and opportunity to assist the learner/children regarding this matter).</i></p> <p>E. After knowing the parts of the Female Reproductive System, let us have the next activity. To do that, follow the instructions below.</p> <ol style="list-style-type: none">1. Identify one external reproductive part of the Female Reproductive System.2. Think of ways to protect them using the letters of its identified part.	
--	--	--	---	--



Republic of the Philippines
Department of Education

			<p>3. Use bilingualism if needed.</p> <p>The composition will be evaluated using the rubrics found in ANNEX C.</p> <p>F. Congratulations! A lot of learning were gained today. Don't forget your significant learning for this day and apply it in your daily lives. Remember, even at a young age, you should already protect your reproductive organ and practice proper hygiene to reduce the risk of acquiring diseases and infections.</p>	
--	--	--	--	--



Republic of the Philippines
 Department of Education

WEEKLY HOME LEARNING PLAN IN SCIENCE
GRADE 5

Quarter 2, Week 1

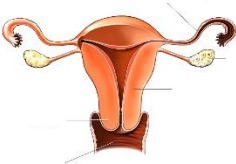
Date: _____

(For Online Distance Learning Modality)

Day & Time	Learning Area	Learning Competency	Learning Tasks	Mode of Delivery
Wednesday (8:00 AM- 9:00 AM)	Science 5	<p>Week 1 MELCs *Describe the parts of the reproductive system and their functions.</p> <p>Learning Competency: Describe the parts of the reproductive system and their functions. (S5LT-IIa-1)</p> <p>Objectives: 3. Identify the parts of the female reproductive system 4. Describe the female reproductive system.</p> <p>MHM Integration:</p>	<p>A female has also a Reproductive System whose parts play an important role in the reproduction. Let us know them and their functions as we discuss and do some of the activities prepared for you.</p> <p>A. For the first activity, an illustration will be flashed on your screen. Examine it and tell me your observation. You may answer the following questions below.</p> <ol style="list-style-type: none"> 1. What is the picture about? 2. How will you describe it? 	<p>FOR ODL CLASS: Send outputs to Google classroom account provided by the subject teacher or any another platform recommended by the subject teacher. Materials for every task maybe modified by your subject teacher. Follow his/her instructions.</p>



Republic of the Philippines
Department of Education

		<p>C. Ways on how to take care the vagina.</p> <ol style="list-style-type: none">4. Wash your genital areas with mild soap and water.5. Do not borrow another person's underwear.6. Change underwear regularly. <p>D. It is alright to mention or name the Female Reproductive System in local dialect/terms but it should not make fun. It important to use the correct terms to refer to both the male and female reproductive parts.</p>	<p>B. For the next activity, let us see if you could be able to identify the parts of the Female Reproductive System. An illustration of the Female Reproductive System will be flashed on the screen. To be more interactive, you will be guided by your teacher for any online application that will show each part to be identified. This could be in the form of matching type, multiple choice, etc.</p> <p>Sample illustration:</p>  <p>After accomplishing the activity, try answering the questions below.</p> <ol style="list-style-type: none">1. Do you think you were	
--	--	---	--	--



Republic of the Philippines
Department of Education

			<p>able to name the parts correctly?</p> <p>2. Which part of the system is already familiar to you? What do you call to that part?</p> <p>Find out the correct labelling of the parts of the Female Reproductive System later after the discussion.</p> <p>One part of the female Reproductive System that you are familiar with is the vagina. It plays an important role in the reproduction. It needs to be taking care of. <i>How will you do that if you are a girl? If you are a boy, how would you help your younger sister/s in taking care of this part?</i></p> <p>(Note to the learner: <i>Read the MHM Integration in letter A in the 3rd column.)</i></p>	
--	--	--	--	--



Republic of the Philippines
Department of Education

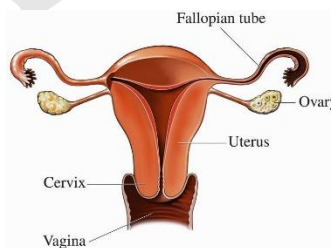
			<p>Why is it necessary to practice proper hygiene on the genital areas?</p> <p>C. Based on the previous activity, what are your answers to the questions below?</p> <ol style="list-style-type: none">1. What are the parts of the female reproductive system?2. How will you describe the Female Reproductive System? <p>D. Let's us find out if all your answers for the parts of the Female Reproductive System are correct. Below are its parts and specific functions. Study them. You may also refer to the presentation of your teacher on screen.</p>	
--	--	--	--	--



Republic of the Philippines
Department of Education

The Female Reproductive System is made of several organs which include the ovaries, fallopian tubes, uterus, and vagina. It is specifically responsible for producing egg cells and supporting a developing baby inside a mother's womb.

Parts of the Female Reproductive System



Ovary

The ovaries are oval in shape and located in the lower part of the abdomen.

Fallopian tube

A pair of tubes that connects the ovaries and the uterus.

Uterus

Also called the **womb**, the uterus is a hollow



Republic of the Philippines
Department of Education

			<p>muscular organ located at the lower abdomen. It has a soft, smooth inner lining called the uterine or endometrium.</p> <p>Cervix The cervix is located at the lower part of the uterus. It is a narrow opening between the uterus and the vagina.</p> <p>Vagina Also called the birth canal, the vagina is a hollow, muscular tube that extends from the cervix to the vaginal opening called vulva.</p> <p>(Note to the learner: <i>Read the MHM integration letter B before proceeding to the next part.)</i></p> <p>(Note to the parents/guardian: <i>Read the MHM integrations, letters A and B. This is for your awareness and opportunity to assist</i></p>	
--	--	--	--	--



Republic of the Philippines
Department of Education

			<p><i>the learner/ children regarding this matter).</i></p> <p>E. After knowing the parts of the Female Reproductive System, let us have the next activity. To do that, follow the instructions below.</p> <ol style="list-style-type: none">1. Identify one external reproductive part of the Female Reproductive System.2. Think of ways to protect them using the letters of its identified part.3. Use bilingualism if needed. <p>The composition will be evaluated using the rubrics.</p> <p>This activity is posted on the Google Classroom already. Open it and accomplish the task.</p>	
--	--	--	---	--



Republic of the Philippines
Department of Education

			<p>Don't forget to turn it in after accomplishing it.</p> <p>F. Congratulations! A lot of learning were gained today. Don't forget your significant learning for this day and apply it in your daily lives. Remember, even at a young age, you should already protect your reproductive organ and practice proper hygiene to reduce the risk of acquiring diseases and infections.</p>	
--	--	--	---	--



Republic of the Philippines
Department of Education

ANNEX A

(Pieces of puzzles are for illustrations)



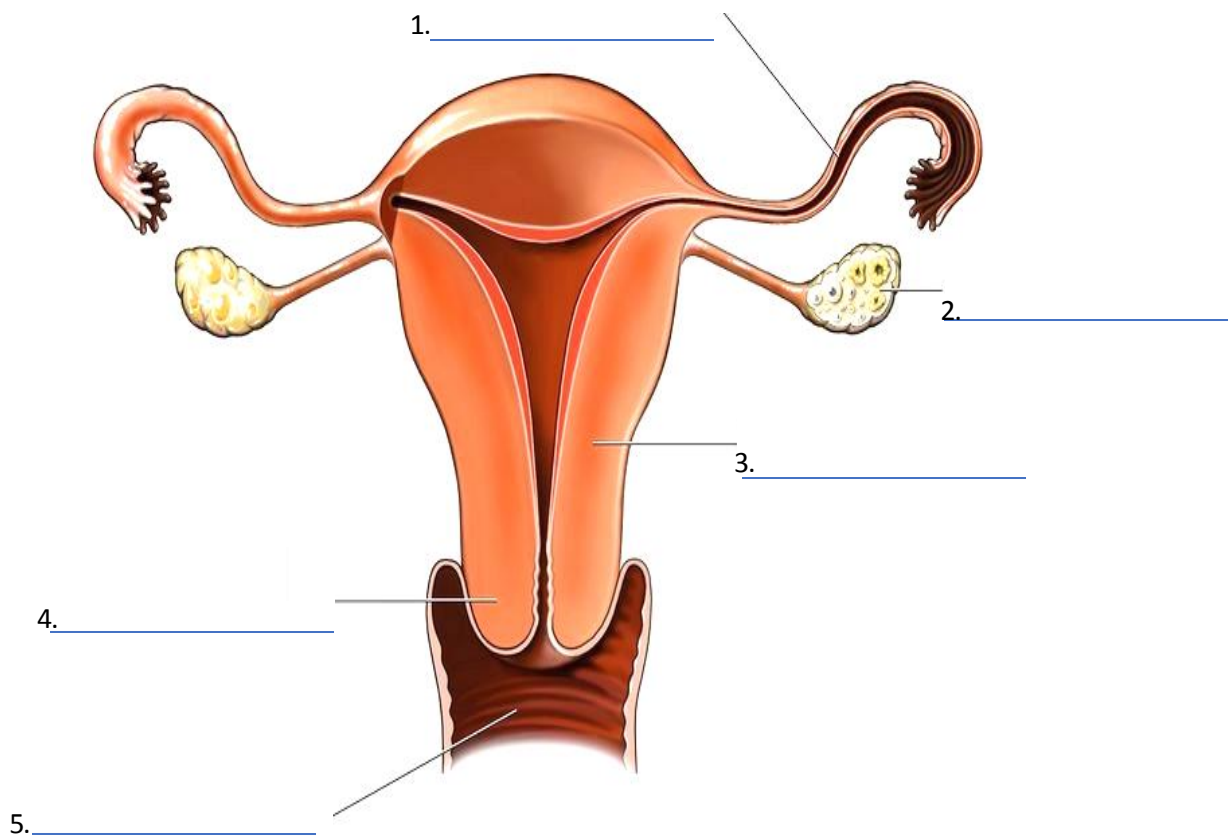


Republic of the Philippines
Department of Education

ANNEX B

Task 2. "Internal Affairs"

Directions: Select from the box below the part of the Female Reproductive System and write it on the blank corresponding its part.



Vagina

Ovary

Cervix

Fallopian Tube

Uterus



Republic of the Philippines
Department of Education

ANNEX C

Rubrics in evaluating a composition.

CRITERIA	3	2	1
Relevance to the theme	The composition is relevant and has used all the letters of the part	The composition is relevant and but did not use all the letters of the part	The composition is irrelevant.
Language used	The languages is clear and easy to understand.	The language used is understandable but not clear.	The language used is not understandable.
Learner's Participation	All members of the group participated in the activity.	99-75% of the members participated in the activity.	74% of the members participated in the activity.